



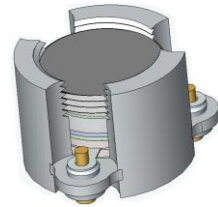
ADMOTEC S-BAND SMD CIRCULATOR

3580 ~ 3800 MHz

ADS369SD

Features

- | | |
|---------------------------|------------------------------|
| - Low Insertion | - Robust Design |
| - Custom Design Available | - Standard Reflow Processing |
| - RoHS Compliant | - Tape and Reel |



Electrical Characteristics

Parameter	Units	Specifications
Frequency	MHz	3580 ~ 3800
Insertion Loss	dB Max.	0.45
Return Loss	dB Min.	18
Isolation	dB Min.	19
Temperature	°C	-30 ~ +85
Power FWD / REV.	W Max.	60/60
Direction		CW
Input/Output Impedance	Ω	50

Mechanical Dimensions

